

SERVICE BROCHURE



IMAR
**FUEL STORAGE & TRANSPORT
SOLUTION**

WWW.IMAR.CO.IN



SMART DIESEL SOLUTIONS

At IMAR, we specialize in delivering comprehensive and innovative fueling and precise metering solutions. From highly mobile diesel units and advanced digital dispensers to robust stationary storage tanks and high-accuracy industrial flow meters, our products are engineered for efficiency, compliance, and reliable performance across all your critical operations

POWERING MORE POSSIBILITIES WITH IMAR

- MDU SERIES: MOBILE DIESEL UNITS
- DIGITAL DISPENSER SERIES: MFLOW / PDM
- IMAR STATIONARY TANK SERIES (1KL-6KL)
- IMAR HIGH-CAPACITY STORAGE TANKS (10KL / 20KL)
- POSITIVE DISPLACEMENT METER (PDM SERIES – TRI ROTOR)
- PDGM SERIES: POSITIVE DISPLACEMENT GEAR METER



WWW.IMAR.CO.IN



MDU SERIES: MOBILE DIESEL UNITS

At IMAR, we specialize in delivering comprehensive and innovative fueling and precise metering solutions. From highly mobile diesel units and advanced digital dispensers to robust stationary storage tanks and high-accuracy industrial flow meters, our products are engineered for efficiency, compliance, and reliable performance across all your critical operations



MDU-2~ 6 KL



MDU-1~ 1.5 KL



CAPACITY 1KL TO 6KL



FILTRATION 100 MESH



FLOW RATE 10-70 LPM



HOSE LENGTH 10 METERS



NOZZLE AUTO CUT OFF



ACCURACY $\pm 0.3\%$

PRODUCT RANGE

Models

- MDU-1KL
- MDU-1.5KL
- MDU-2.5 KL
- MDU-6KL

DISPENSER

DIGITAL PDM/MFLOW
DIGITAL PDM/MFLOW
DIGITAL PDM/MFLOW
DIGITAL PDM

Pumping System

12V DC PUMP
12V DC PUMP
12VDC/PTO PUMP
PTO PUMP

APPROVAL

W&M
W&M
W&M
W&M,PESO



WWW.IMAR.CO.IN



IMAR STATIONARY TANK SERIES (1KL-6KL)

Our Digital Dispenser Series delivers high-precision diesel dispensing with smart features and rugged reliability. Choose between the MFLOW or PDM model – both engineered with $\pm 0.3\%$ accuracy, 5-meter fuel hose with auto-cutoff, 100-mesh washable filtration, and vehicle interlock-ready systems. MFLOW offers a full LCD interface with numeric keypad, while PDM keeps it compact and efficient. With data download, RFID authentication, and protocol automation, these dispensers integrate seamlessly into any fueling operation – ideal for bowzers, storage units, or fixed site setups.



CAPACITY 1KL TO
6KL



FILTRATION 100
MESH



FLOW RATE 10-70
LPM



HOSE LENGTH
10 METERS



NOZZLE AUTO CUT
OFF



ACCURACY
 $\pm 0.3\%$



WWW.IMAR.CO.IN



TECHNICAL SPECIFICATION

• TANK TECHNICAL SPECIFICATION

CAPACITY	1 KL/1.5KL/2.5KL/6KL
TANK DESIGN	Elliptical shape, Design as per PESO guideline
TANK MATERIAL	3.15mm MS Sheet
COMPARTMENT	03, Rear Compartment for Dispenser & Hose reel with rigid metal door & lock
MANHOLE	01/02 with manhole & Peso approved safety fittings
TANK INLET OUTLET	Fill Point with Cap, Dip Point with Cap
SAFETY FITTINGS	Emergency Vent, Pressure Vacuum Valve, Emergency Shut-Off Valve (PESO Approved)
PUMP	Continuous Rating 12V DC Battery Geared Motor Vane Pump or PTO Driven Vane Pump
FLOW RANGE	30-70 LPM (Optional 100 , 200 LPM)
ACCESSORIES	Auto Rewind Hose Reel, Earthling reel, Fire Extinguisher

• DIGITAL DISPENSOR TECHNICAL SPECIFICATION

MODEL/SERIES	MFLOW / PDM
ACCURACY	+/- 0.3%
DIGITAL DISPLAY (30mm bright LCD with WHITE BACKLIGHT)	1 st Line , 8 Digit Liter Qty (L) 2 nd Line, 8 Digit Amount (R) 3 rd 6 Digit Price (R/L)
KEYPAD	Alfa Numeric Metal Keypad , With 16x2 Lcd Display For Setting
POWER SUPPLY	12/24 VDC, 230V AC
FLOW RANGE	50 Lpm Std Duty 70 Lpm Hi Duty
PUMPING SYSTEM (external pump As DU is Pressure type)	Vane Type Pump Dc(battery), Ac Or Pto Operated, Required Pressure 0.5 Bar -2 Bar Filtration: 100 Mesh Ss Washable
DELIVERY HOSE & NOZZLE	Fuel Resistant Hose 5 Mtr Long, Auto Cut Off Nozzle With Breakaway & 360 Swivel
ENVIRONMENTAL CONDITION	Liquid Temperature: - 0 to 40°C Operating Pressure : 0.2 to 5 bar Max Liquid Viscosity : 1-100 cSt Media : Fuel or Liquid other than water

FEATURES

PRESET BATCH with VEHICLE ID interlock prior to start dispensing,
BILL PRINT in set of 2 Copies with space for Sign of Driver & Receiver
DATA DOWNLOADER : Downloads data of last 3000 batches in Pen drive in EXCEL format
RFID CARDS & READER for authentic delivery, up to 200 cards
COMMUNICATION PORT : RS485 Serial interface for Automation with Protocol EMCUBE PROTOCOL : Version EE2201.1
METROLOGY APPROVAL : Weights and Measure approved measuring system





IMAR STATIONARY TANK SERIES (1KL–6KL)

Built for secure on-site fuel storage, our stationary tank series ranges from 1KL to 6KL capacity, designed in elliptical shapes that meet PESO safety standards. Each tank includes a rear compartment for dispensing, auto-rewind hose reels, safety valves, and fire safety features. With a robust 3.15mm MS body, optional PTO or DC pumping systems, and flow rates of up to 200 LPM, this is the ideal solution for fixed-location fueling at industrial, residential, or construction sites.



IMAR HIGH-CAPACITY STORAGE TANKS (10KL / 20KL)

For operations requiring high-volume diesel or AdBlue storage, our 10KL and 20KL cube-style tanks offer unmatched durability and safety. Mounted on skid or vehicle frames, these units are built with PESO-compliant fittings, 3.15mm MS sheet, and come equipped with MFLOW or PDM digital dispensers. The system supports 12V DC or 230V AC pumping, auto-rewind hose reels, and a clean 50 LPM output – making them perfect for large facilities, fleet hubs, or centralized fuel management setups.



WWW.IMAR.CO.IN



TECHNICAL SPECIFICATION

• IMAR-20/30/40.KL TANK SPECIFICATION

CAPACITY	1 KL/1.5KL/2.5KL/6KL
TANK DESIGN	Elliptical shape, Design as per PESO guideline
TANK MATERIAL	3.15mm MS Sheet
COMPARTMENT	03, Rear Compartment for Dispenser & Hose reel with rigid metal door & lock
MANHOLE	01/02 with manhole & Peso approved safety fittings
TANK INLET OUTLET	Fill Point with Cap, Dip Point with Cap
SAFETY FITTINGS	Emergency Vent, Pressure Vacuum Valve, Emergency Shut-Off Valve (PESO Approved)
PUMP	Continuous Rating 12V DC Battery Geared Motor Vane Pump or PTO Driven Vane Pump
FLOW RANGE	30-70 LPM (Optional 100 , 200 LPM)
ACCESSORIES	Auto Rewind Hose Reel, Earthling reel, Fire Extinguisher

• IMAR FOR DIESEL / ADEBLUE

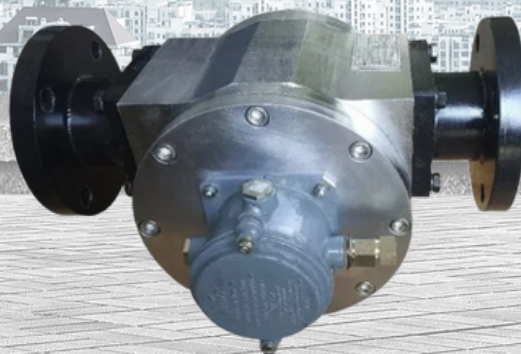
CAPACITY	1 KL/2KL
TANK DESIGN	Cube type/ Capsule type
TANK MATERIAL	3.15mm MS Sheet
COMPARTMENT	01/02 with manhole & Peso Approved safety fittings
MOUNTING	Skid/Base Frame/Vehicle Load Body
DISPENSER	Digital W & M Approved, Model PDM or MFLOW
PUMP	Continuous Rating 12V DC Battery Geared Motor Vane Pump or 230 V AC Centrifugal Pump
FLOW	50 LPM
HOSE	5mtr / 10mtr with Auto rewind reel





POSITIVE DISPLACEMENT METER (PDM SERIES – TRI ROTOR)

Designed for high-accuracy industrial metering, our PDM TRI Rotor series delivers precision flow measurement up to 1000 LPM with $\pm 0.15\%$ accuracy. Compatible with a wide range of viscosities (0.5–350 cP), this meter handles crude and refined petroleum, fuels, solvents, ethanol, and chemicals with ease. Built for bulk flow metering, tanker loading, batching, and process control, it's the ideal solution for high-volume, mission-critical environments. Available in multiple sizes (25–80 NB) with rugged construction and ISO-certified quality.



SIZE 20–80
NB



VISCOSITY 0.5–
350 CP



ACCURACY
 $\pm 0.15\%$



FLOW RANGE UP
TO 1000 LPM

Application

- CRUDE PETROLEUM PRODUCT
- REFINED PETROLEUM PRODUCT
- INDUSTRIAL CHEMICALS
- INDUSTRIAL OIL FUELS
- SOLVENTS
- ETHANOL



BULK FLOW
METERING



INDUSTRIAL
PROCESS



TANKER
LOADING
UNLOADING



BATCHING

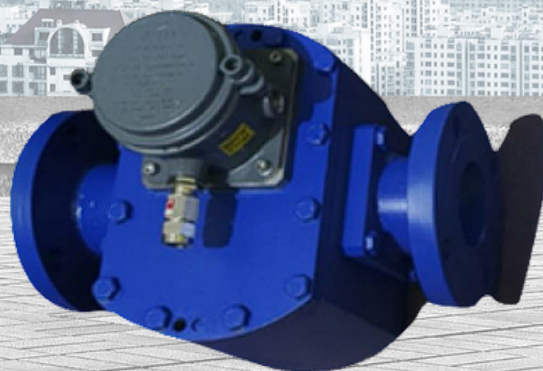


WWW.IMAR.CO.IN



PDGM SERIES: POSITIVE DISPLACEMENT GEAR METER

Engineered for heavy-duty industrial applications, our PDGM Series delivers precision metering with flow rates up to 3000 LPM and accuracy between $\pm 0.1\%$ – 0.3% . Built for crude and refined petroleum, industrial oils, chemicals, and ethanol, it supports a wide viscosity range (0.5–350 cP) and is available in sizes from 15 to 150 NB. Ideal for high-speed dispensing, bulk flow metering, tanker operations, and process management – this gear-based meter is your go-to for performance-driven, ISO-certified fluid handling.



SIZE 15-150
NB



VISCOSITY 0.5-
350 CP



ACCURACY
 $\pm 0.1\%$ – 0.3%



FLOW RANGE UP
TO 3000 LPM

Application

- CRUDE PETROLEUM PRODUCT
- REFINED PETROLEUM PRODUCT
- INDUSTRIAL CHEMICALS
- INDUSTRIAL OIL FUELS
- SOLVENTS
- ETHANOL



BULK FLOW
METERING



INDUSTRIAL
PROCESS



TANKER
LOADING
UNLOADING



BATCHING



WWW.IMAR.CO.IN

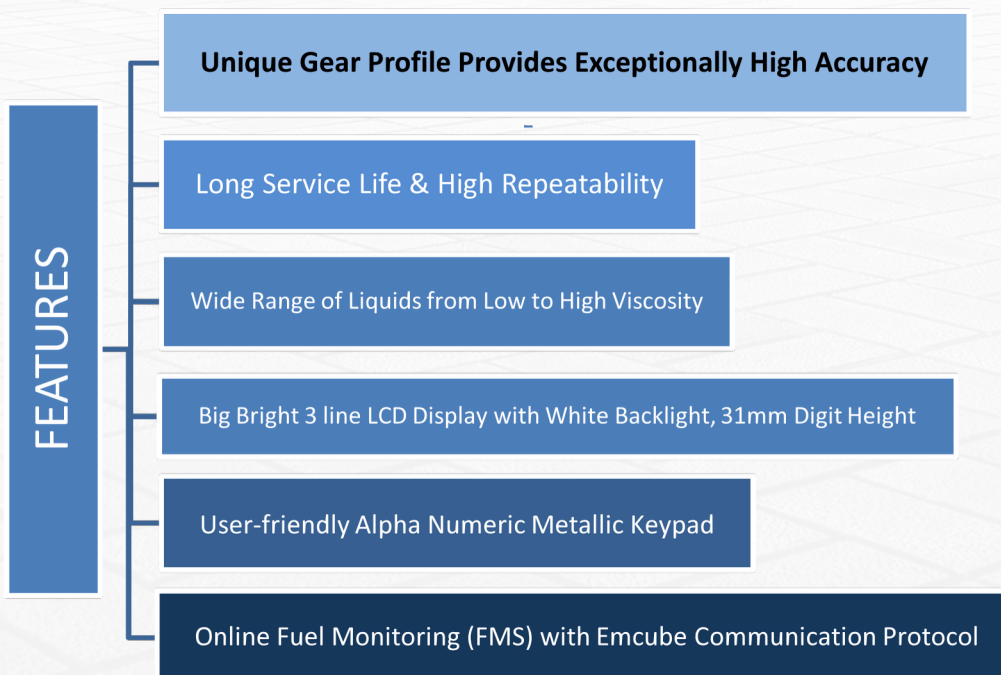
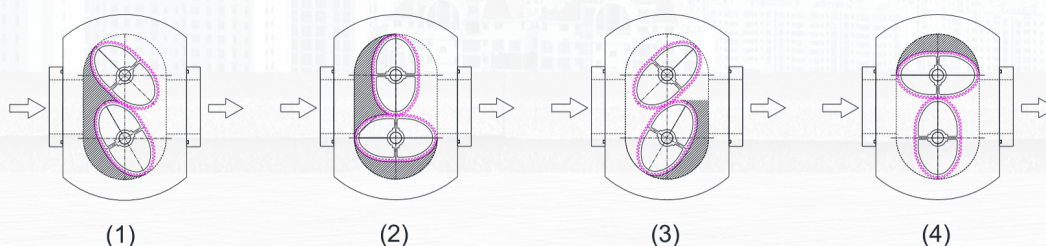


ABOUT : POSITIVE DISPLACEMENT METER

IMAR make Gear type Positive Displacement Flow meter, consisting of measuring chamber & geared two rotors, rotors measures volume of fluid flowing through by counting repeatedly the filling and discharging of known fixed volumes. Rotors are magnetically coupled with solid state sensor, sensor detects cyclic movement of the rotor and produce pulse, as liquid passes pulse is produced and a discharged volume of liquid is measured. The resulting pulse train is proportional to the actual flow rate and provides a highly accurate representation of the fluid flow

WORKING PRINCIPLE

- As shown in figures, Liquid enters through Inlet port & pushes the rotors ahead (Fig 1)
- while the rotor keeps moving ahead space A gets filled (Fig 2) & discharged.(Fig 3)
- The space B gets filled as shown in (Fig 4) & delivers when the rotor moves ahead (Fig 1).
- One cycle is completes while liquid gets discharge from space A & B, Now rotor is ready for the next cycle.





TECHNICAL SPECIFICATION

PDGM SERIES SPECIFICATION

NOMINAL SIZE (NB, mm)	FLOW RANGE (LPM)	FLANGE ENDS (ASME B16.5 #150)	NOMINAL SIZE (NB, mm)	FLOW RANGE (LPM)	FLANGE ENDS (ASME B16.5 #150)
80	1200	3"	15	20	0.5"
100	2000	4"	25	70	1"
150	3000	6"	40	250	1.5"
			50	380	2"

PD FLOWMETER WITH PULSER	
ACCURACY	+/- 0.1-0.3%
FLOW RANGE	10 LPM to 5000 LPM
LINE SIZE	15 NB to 200 NB
END CONNECTION	FLANGES ASME B 16.5 CLASS 150,
OPERATING CONDITION	Max. Operating Temperature: - 0 to 60°C Max. Operating Pressure : 15 bar Max Liquid Viscosity : 1-100 cSt Media : Fuel or Liquid other than water
PULSER	Magnetically Coupled, No Direct Contact with liquid, Digital Signal
MOC	CS/SS304/SS316
PRESET BATCH CONTROLLER	
DIGITAL DISPLAY (30mm bright LCD with WHITE BACKLIGHT)	1 st Line , 8 Digit Liter Qty (L) 2 nd Line, 8 Digit Amount (R) 3 rd Line, 6 Digit Price (R/L) 2 line 16x2 LCD for Operator Settings
KEYPPAD	ALFA NUMERIC METAL KEYPAD , WITH 16X2 LCD DISPLAY FOR SETTING
POWER SUPPLY	12/24 VDC, 230V AC
OPERATING CONDITION	Max. Operating Temperature: - 0 to 60°C Max. Operating Pressure : 15 bar Max Liquid Viscosity : 1-100 cSt Media : Fuel or Liquid other than water
ELECTRONIC ENCLOSURE	FLAME PROOF , WEATHER PROOF /PESO APPROVED
RELAY O/P	DCV Low Flow, DCV High Flow, Pump Starter etc
ALARM	High Flow , Low Flow , Earthing Error
COMMUNICATION	RS485 with Emcube Protocol
STRAINER CUM AIR ELIMINATOR	Offset type, SS Float Operated Vent Valve, Washable SS Mesh
DIGITAL CONTROL VALVE	Duel Stage with High Flow capacity, Separate Valve with Separate Coil Flameproof Coil, Power 12/24V DC, 230 V AC





TRUSTED ENGINEERING IN FUEL DISPENSING & FLOW MONITORING EQUIPMENT

IMAR was incepted in the year 2010 is engaged in manufacturing of Digital Positive Displacement Flow Meters (Tri Rotor & Oval Gear), Mobile Fuel Dispenser, Diesel Bowser, Fuel Consumption Monitor, Preset Batch Controller, Tanker Loading Unloading System, Inline Filter, Air Eliminator, Liquid Filling System, Digital Control Valve and Mechanical Preset Valve. best grade materials and are acknowledged for their accurate readings, functionality, longer service life and durability. Moreover, these products find wide application mining, petrochemical, refinery and automotive industry



WWW.IMAR.CO.IN



OUR PRODUCT CATALOG



WWW.IMAR.CO.IN



OUR PRODUCT CATALOG



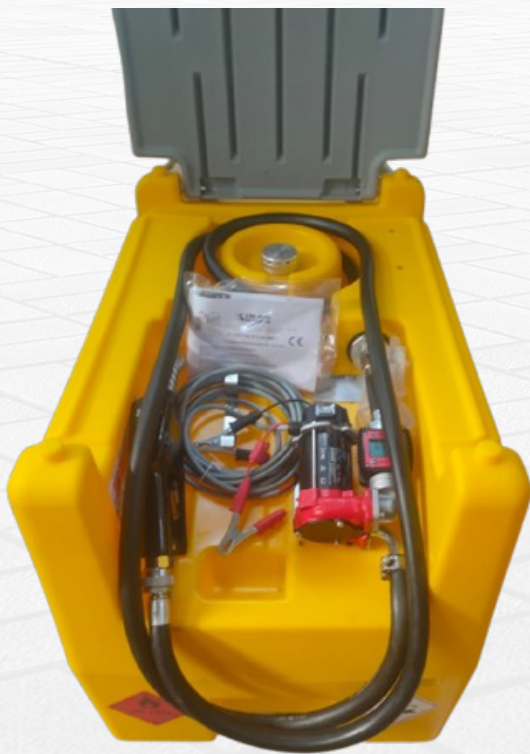
WWW.IMAR.CO.IN



OUR PRODUCT CATALOG



400 Ltr's



200 Ltr's



FLOW SPEED 1000 LPM

